

Moyse's Exercises Journaliers

simplified for novice to intermediate flutists

Jennifer Cluff
September 2011 Galway
Scale Class using Moyse's book.

Chromatic Scales

A

Play each slowly twice with glorious tone quality. Gradually expand the range up to your highest (best) pitch, and eventually add low C# and low C to the bottom of the scale. Metronome helpful for even fingers.



continue upwards
by semitone to your
best highest note of the day.

Whole Tone Scale no. 1 CDE always followed by F#, G#, A#



Moyse's E.J. for novice-intermed. flutists

Whole Tone Scale no. 2

FGAB always followed by Db and Eb

Musical notation for Whole Tone Scale no. 2, consisting of four staves of music in 3/4 time. The first staff is in G major (one flat), the second in F major (two flats), the third in E major (three flats), and the fourth in D major (four flats). Each staff contains a sequence of eighth notes with slurs, and the final staff ends with a double bar line.

Augmented 5th Chords (ie: C, E, G# is a 1-3-#5 chord where the fifth note is a semitone higher than a major chord)

Musical notation for Augmented 5th Chords, consisting of two staves of music in 6/8 time. The first staff shows four chords: C augmented (C, E, G#), F augmented (F, A, C#), Bb augmented (Bb, D, F#), and Eb augmented (Eb, G, Ab). The second staff shows a descending eighth-note scale starting from the highest note of the first chord.

(Db, F, A is also an augmented fifth chord, where the fifth note is sharpened 1/2 step from Ab)

Musical notation for the Db, F, A augmented fifth chord exercise, consisting of two staves of music in 6/8 time. The first staff shows a sequence of eighth notes: Db, F, A, Bb, Ab, G, F, Eb, D, C. The second staff shows a sequence of eighth notes: Db, F, A, Bb, Ab, G, F, Eb, D, C.

Augmented 5th Chords

This section contains four staves of musical notation for an exercise on augmented 5th chords. The first staff begins with a treble clef, a key signature of one sharp (F#), and a common time signature. It features a sequence of eighth notes with slurs and accents, including a repeat sign. The second staff continues the sequence with a long slur over the entire line. The third staff changes the key signature to one flat (Bb) and continues the exercise. The fourth staff concludes the exercise with a repeat sign.

Diminished Seventh Chords

This section contains four staves of musical notation for an exercise on diminished seventh chords. The first staff begins with a treble clef, a key signature of one flat (Bb), and a 2/4 time signature. It features a sequence of eighth notes with slurs and accents, including a repeat sign. The second staff continues the sequence with a long slur over the entire line. The third staff continues the exercise with various chordal textures. The fourth staff concludes the exercise with a repeat sign.

Major Scales

C Major Scale

*Crescendo*

Db Major Scale

*Crescendo*

D Major Scale

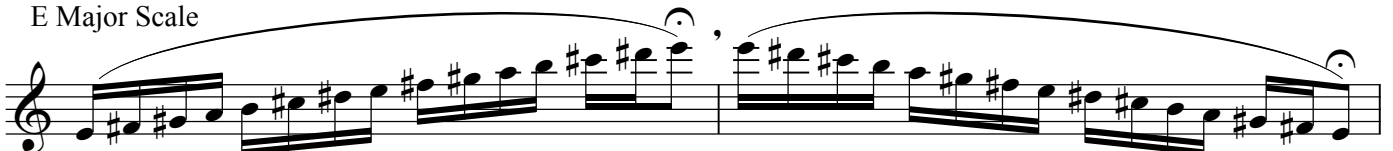
*Crescendo*

Eb Major Scale

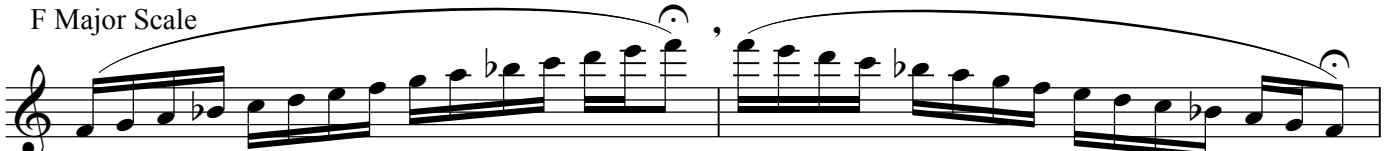
*Crescendo*

Ask yourself: Is my tone beautiful descending, as well?

E Major Scale

*Crescendo*

F Major Scale

*Crescendo*

F# Major Scale

Crescendo

G Major Scale

Crescendo

For these last few scales that ascend quite high into the third register, feel free to play only as high as your best note, (best in tone quality), and then descend again. You can add one higher note every few days or weeks, as your longtone studies gradually help improve your top register. Get help from your flute teacher.

A^b Major Scale

Crescendo

A Major Scale

Crescendo

B^b Major Scale

Crescendo

B Major Scale

Crescendo

Harmonic Minor Scales

B

Place a pause anywhere you like, depending on tempo that you choose.
Breathe for a beat or two, and then repeat the note you paused on and continue.
Later when you speed up the tempo, you will find you can play longer phrases.

C Harmonic Minor



Note: you can add your own "pause and rest" places. Just put
mentally created pauses wherever you need to or want to for musical effect.
You can then restart on the note you paused on to create the new starting point.

C# Harmonic Minor

D Harmonic Minor

Eb Harmonic Minor

Feel free to improvise and create your own patterns using 2-3 notes at a time.

Improvise, add pauses, create a glorious sound.

E Harmonic Minor



F Harmonic Minor



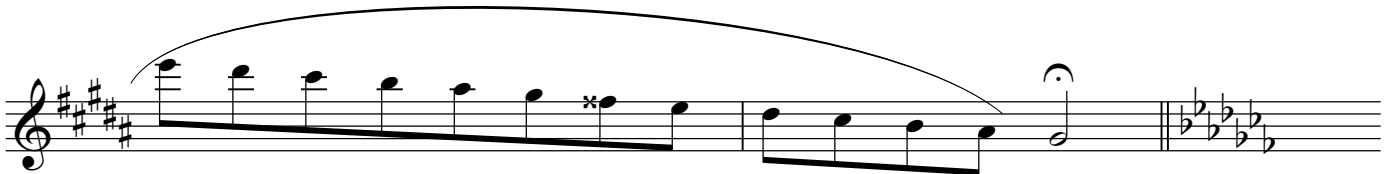
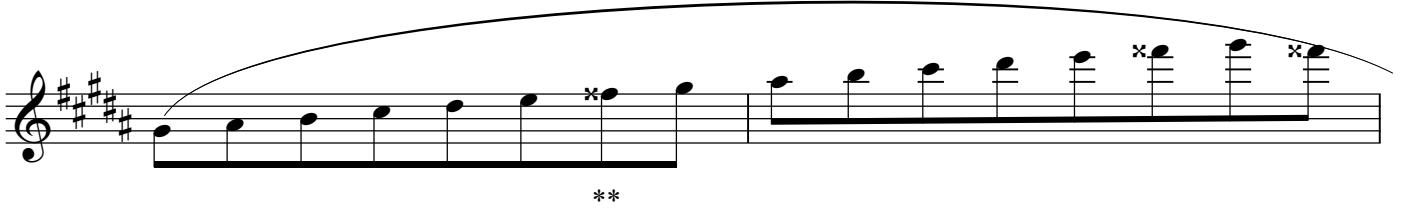
F# Harmonic Minor



G Harmonic Minor

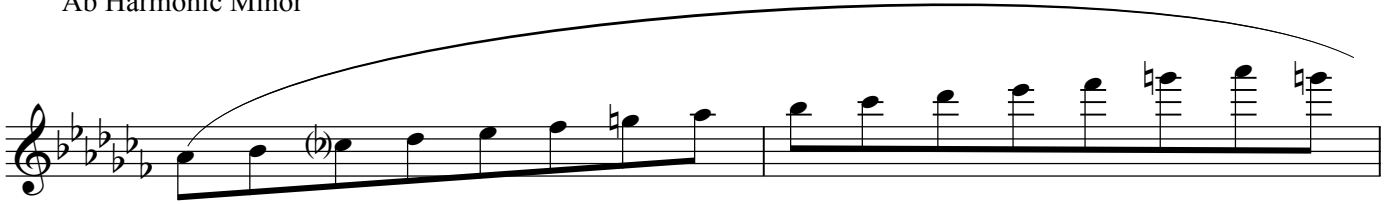


G# Harmonic Minor Feel free to add lots of pauses when first learning these more challenging scales.

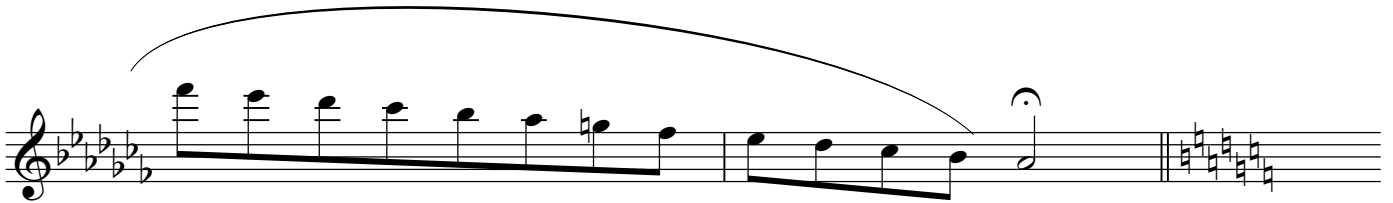


**F double sharp is equal to G natural.

Ab Harmonic Minor

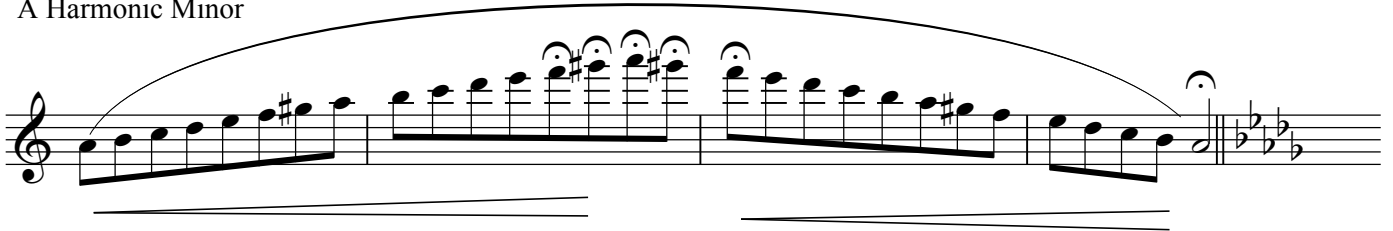


Note: This is the same scale you just played on pg. 7 as G# minor.

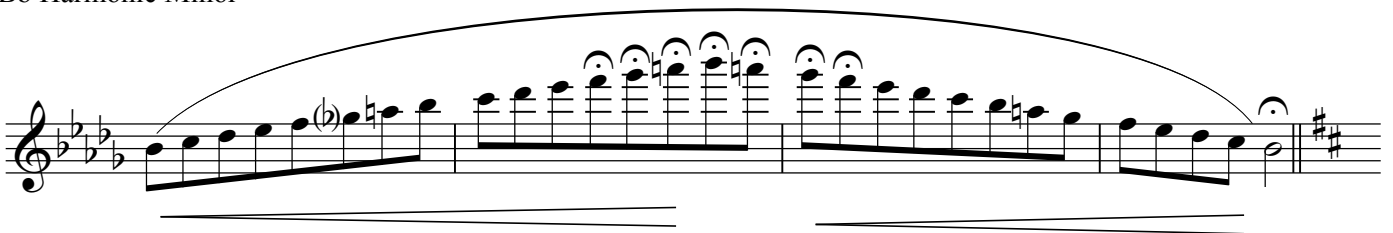


Pause to find your best ringing, round and clear tone.

A Harmonic Minor

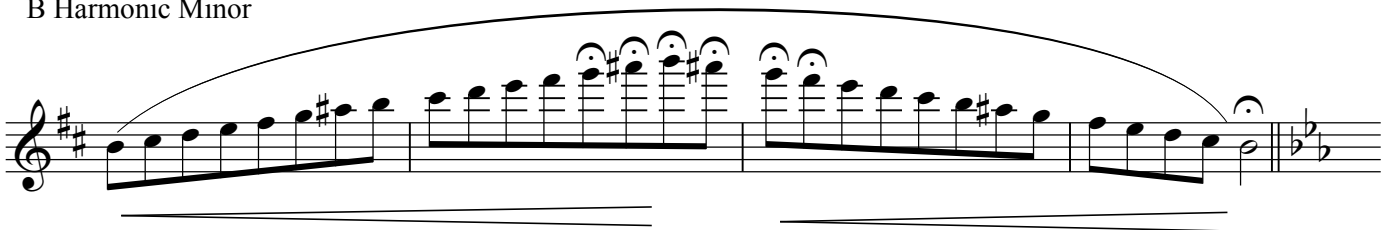


Bb Harmonic Minor



Check high register fingerings if unsure; consult fingeringchart.

B Harmonic Minor



Improvise using scales

You can use scale patterns to read forwards backwards and create your own "turn-around points".
Go back over the major and minor and re-write them to suit the moment. Add articulations & expression.

C harmonic minor improvisation sample:

A single staff of music in C harmonic minor (three flats). It features a melodic line with a long slur over the first six notes (C4 to Bb4), followed by a descending scale. A dynamic marking of *mf* is placed below the staff. The piece concludes with a double bar line.

D minor improv sample

Two staves of music in D minor (two flats). The first staff contains a melodic line with a long slur over the first six notes (D4 to C4), followed by a descending scale. The second staff continues the melodic line with a long slur over the first six notes (D4 to C4), followed by a descending scale. The piece concludes with a double bar line.

F minor improv sample

Four staves of music in F minor (three flats). The first staff contains a melodic line with a long slur over the first six notes (F4 to E4), followed by a descending scale. The second staff continues the melodic line with a long slur over the first six notes (F4 to E4), followed by a descending scale. The third staff continues the melodic line with a long slur over the first six notes (F4 to E4), followed by a descending scale. The fourth staff continues the melodic line with a long slur over the first six notes (F4 to E4), followed by a descending scale. The piece concludes with a double bar line.